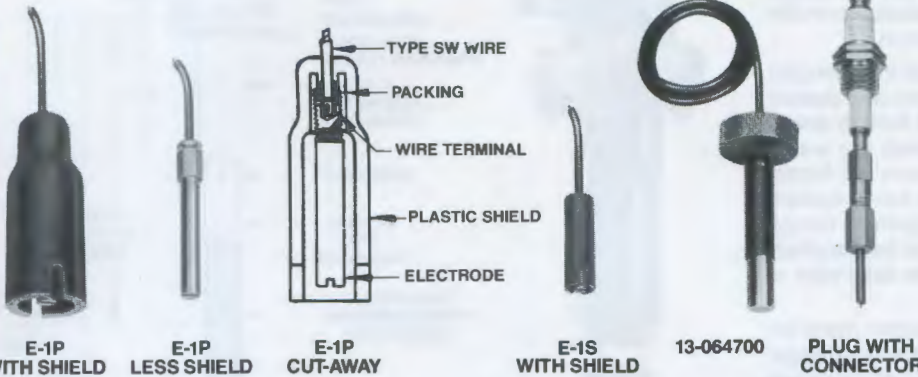


WIRE SUSPENSION ELECTRODES



WIRE CONNECTOR: This adapter is necessary to attach the Type SW suspension wire to the 1/4-20 female electrode holder connections. One is required for each wire suspension electrode used with electrode plugs, and Type E and Type AE-2 holders. See pages 6 & 7.

CATALOG NUMBER
6013—C—BR

Material		LIST PRICE
Brass Old No. 12-038400	BR	35.00
303 SS Old No. 12-043800	SS	36.00

Type SW Suspension Wire: Designed to provide maximum strength and insulation, Type SW wire should always be used with B/W wire suspension electrodes to assure that a watertight seal is accomplished by the packing in the electrode. The wire is single conductor 18 gauge, 41 strand copper with 4/64" vinyl insulation.

CATALOG NUMBER
6013—SW—10



Specify Length In Feet	LIST PRICE
Old No. 01-130500	50.00 per ft.

Wire suspension electrodes are designed for use in applications requiring long lengths, or where limited head room prevents installation of solid rod electrodes. They can be used with all holders except Type CE-2 & 3. Electrode Types E-1P and E-1S are for use in water and non-corrosive liquids. Type 13-064700 is designed for corrosive liquids and is available with a variety of rod materials. Types E-1P and E-1S electrodes with molded plastic shields can be used at temperatures up to 150°F and other electrodes up to 190°F.

Type E-1P-Shielded: This electrode is approximately 4" long and assembled in a molded plastic insulating shield 1 7/16" in diameter. Designed for general purpose use, it is ideal for elevated tanks, sewage pumping stations, and deep well installations.

Type E-1P — Less Shield: This electrode is intended for applications where space prevents the use of other electrodes and where vertical spacing between electrodes is 4" or more.

Type E-1S-Shielded: A 2" long electrode assembled in a molded plastic shield 9/16" in diameter. Ideal for use in submersible pump installations and other applications where little clearance is provided for installation.

Type 13-064700: This electrode is intended for corrosive liquids. It is 3" long made from a 1/2" diameter rod and available in any of the materials listed below. The type SW wire is attached at the factory and the connection is completely sealed with PVC and bonded to the insulation of the SW wire.

6013—W1

CATALOG SECTION

	ELECTRODE TYPE	ELECTRODE MATERIAL	OLD PART NO.	LIST PRICE
W1	E-1P With Shield	Brass	13-020600	31.00
W2	E-1P With Shield	303 Stainless	13-020700	17.00
W3	E-1P Less Shield	Brass	13-052700	4.00
W4	E-1P Less Shield	303 Stainless	13-052600	9.00
W5	E-1S With Shield	Brass	13-022000	10.00
W6	E-1S With Shield	303 Stainless	13-024300	10.00

These electrodes are field assembled and the required amount of Type SW wire must be ordered as a separate item. See above.

NOTE — When wire suspension electrodes are to be used with electrode plugs, or Type E or Type AE-2 electrode holders, wire connectors must also be ordered for each electrode. See above.

6013—W7

CATALOG SECTION

	ELECTRODE TYPE	ELECTRODE MATERIAL	OLD PART NO.	LIST PRICE
W7	13-064700 With SW Wire	316 Stainless	13-064702	340.00
W8	13-064700 With SW Wire	Monel	13-064703	50.00
W9	13-064700 With SW Wire	Nickel	13-064704	50.00
W10	13-064700 With SW Wire	Carpenter 20	13-064705	40.00
W11	13-064700 With SW Wire	Hastelloy B	13-064707	60.00
W12	13-064700 With SW Wire	Hastelloy C	13-064706	60.00
W13	13-064700 With SW Wire	Titanium	13-064709	60.00

10

	LIST PRICE
Type SW Wire Length In Feet	ADD 50.00 per ft.

These electrodes come complete with the Type SW wire permanently attached to the electrode. Lengths must be specified when ordering.

DISCOUNT SCHEDULE LL1
Prices Subject to Change Without Notice

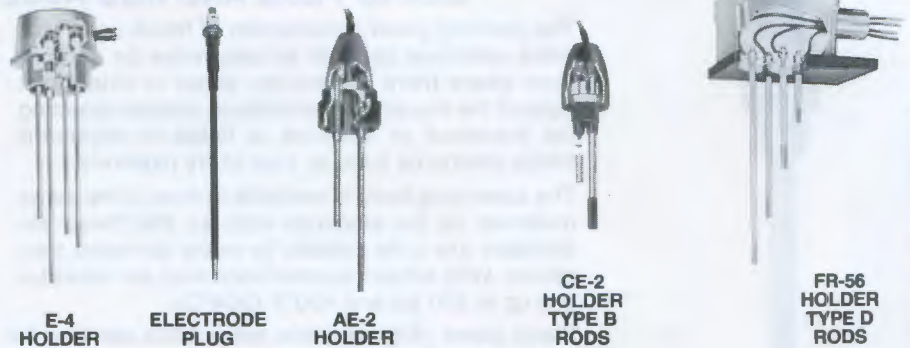
ELECTRODE MATERIAL SELECTION

The chart below suggests electrode material for some typical liquids. Electrode corrosion is difficult to predict because the rate of corrosion is effected by many factors such as: concentration, temperature and impurities. Therefore, this information should be used as a general guide, and the final choice should be determined from actual application conditions based on previous experience and knowledge.

ELECTRODE MATERIAL	TYPICAL LIQUID TO BE CONTROLLED
Brass	Soft Water, Condensate
316 SS	Water, Sewage, Beer, Alcohol, Food Products, Chemicals, Many Mild Acids
Monel	Acetic Acid, Sea Water
Nickel	Boric Acid, Calcium Hydroxide
Carpenter 20	Sulphuric Acid, Alum Solutions
Hastelloy B	Hydrochloric Acid
Hastelloy C	Hydrofluoric Acid
Titanium	Phosphoric Acid, Brine Ferric Chloride, Hot Nitric Acid
Carbon Tip	Hydrochloric Acid Carbonated Water

Contact BIW For Specific Recommendations

SOLID ROD ELECTRODES



TYPE A RODS

Solid rod electrodes are generally used where relatively short lengths of 6 feet or less are required. Care should be exercised when specifying lengths over 6 feet. Longer rods and those installed horizontally should be insulated. After cutting insulated rods, strip about 1 inch of insulation off lower end to expose the bare rod.

TYPE A electrode rods are 1/4" diameter and have 1/4-20 thread for use with electrode plugs, and Type E and Type AE-2 electrode holders. A boot made of the sheath material is furnished to protect and insulate the lower side of the electrode plug.

TYPE B electrode rods are 1/4" diameter and are tapped 6-32 for use only on Type CE-2 and CE-3 holders. Lengths over 12 inch should be insulated and lengths over 30 inch not recommended.

TYPE C electrode rods are 1/4" diameter and have the upper end machined with a shoulder and 10-24 thread to assemble into Type KF holders.

TYPE D electrode rods are 1/4" diameter are similar to Type C except the upper end is machined to a length that fits only Type FR holders.

6013—SS—P—A—4

INSULATION MATERIAL LIST PRICE

X	Bare Rod	
P	PVC Sheath Max. Temp. 190°F (88°C)	
T	Teflon Sheath Max. Temp. 550°F (288°C)	
PC	Carbon Tip Installed On PVC Insulated Rod	Add \$12.00
TC	On Teflon Insulated Rod	

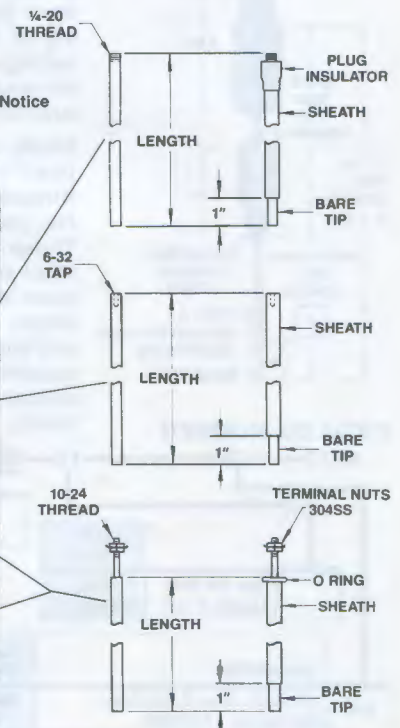
List Price Per Foot or Fraction

ROD MATERIAL	BARE ROD	Insulated Rod	
		PVC	TEFLON
BR Brass	\$ 7.50	\$40.00	\$50.00
SS 316 Stainless	\$14.00	\$45.00	\$55.00
MO Monel	\$16.40	\$25.00	\$34.20
NI Nickel	\$16.70	\$22.00	\$30.20
CA Carpenter 20	\$16.40	\$22.00	\$31.20
HB Hastelloy B	Consult Factory		
HC Hastelloy C	\$20.70	\$28.00	\$38.20
TI Titanium	\$21.00	\$28.00	\$38.40

DISCOUNT SCHEDULE LL1
Prices Subject to Change Without Notice

ROD TYPE & LENGTH

	Rod Length In Feet See Note Below
A	Has 1/4-20 thread for use on Type E or AE-2 holders and electrode plugs. See pages 6, 7, & 10
6B	Has 6-32 tap for use on Type CE-2 & CE-3 holders. See Page 10
8B	Has 8-32 tap for use on gland electrode assemblies. See page 14.
C	Rod machined for attaching to Type KF holders. See page 9.
D	Rod machined for attaching to Type FR holders. See page 9



NOTE: Standard stock rods are furnished in even foot increments up to 10 ft. long, and must be field cut for intermediate operating lengths. Contact BIW for pricing on other lengths and materials.