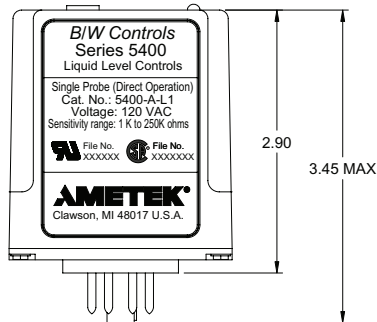


## Series 5400 Plug-In Style Liquid Level Control Relay

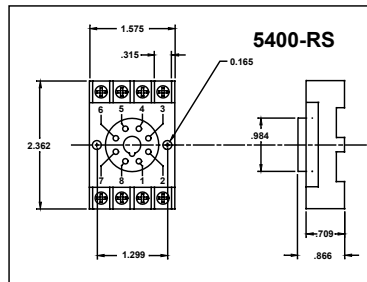
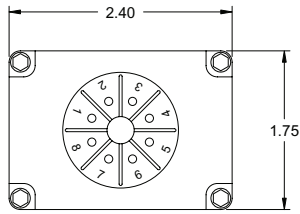
### Ordering Information

	SINGLE LEVEL		DUAL LEVEL	
	Direct Operation (High Level Alarm)	Inverse Operation (Low Level Alarm)	Direct Operation (Pump Down)	Inverse Operation (Pump Up)
110 Volts A.C.	5400-A-L1	5400-B-L1	5400-C-L1	5400-D-L1

### Series 5400 Relay Dimensions



**NOTE:**  
Disconnect power before servicing.



	Telephone Pair	Two #14 in open air	Two #14 in 1/2" conduit	Two #14 in lead sheath
<b>Minimum (1.0k ohms) Sensitivity</b>	In excess of 50,000 feet	In excess of 50,000 feet	In excess of 50,000 feet	8,000 feet
<b>Maximum (250K ohms) Sensitivity</b>	700 feet	530 feet	265 feet	35 feet

### COMPACT, PLUG IN, STYLE RELAYS

Designed to operate from electrodes or probes contacting conductive liquids, they are suited to level control applications such as vending, dispensing, ice-making machines, water softeners, dishwashers, and coffee makers, plus many types of operating equipment in the food, drug, dairy, brewing, distilling and chemical processing industries.

Series 5400 Relays have a low energy sensing circuit with a lock-in holding feature that permits operation over a range of levels, or from momentary contact pilot devices such as float, flow, pressure and limit switches, thermostats and push-button actuators, etc. They are equally suitable for use as original equipment components in many products and systems that require monitoring and control of such process variables as temperature, pressure, humidity, flow, voltage and current, etc.

### BASIC SPECIFICATIONS

**Voltage:** 120 volts ac, 50/60 hertz

24 volts ac, 50/60 hertz (special order)

**Power Required:** 1.2 volt-amperes max.

**Load Contacts:** Single pole, double throw. Silver Cadmium Oxide

**Contact Ratings:** 10 amps resistive load or 1/3 hp at 120 volts ac; 6 amps at 240 volts ac or 28 volts dc. Minimum load is 100 mA at 5 vdc.

**Sensing Voltage:** 18 vac RMS max.

**NOTE:** All line voltage circuits are isolated from the low voltage ac sensing circuit to assure optimum safety in service.

**Sensing Current:** 2.0 mA RMS max.

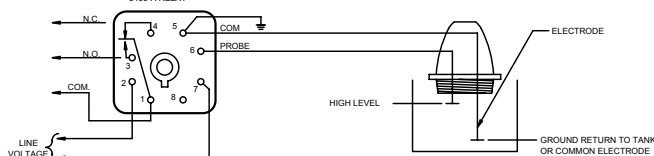
**Sensitivity:** Adjustable 1K to 250K ohms +/- 10%. factory set at 100k OHMS +/- 10%

**Mounting:** 8 pin octal base socket (sold separately)

**Time Delay:** 5 seconds +/- 10%, other delay times available on 5400-A and 5400-B series only

DIAGRAM C:

HIGH LEVEL ALARM  
5400-A DIRECT OPERATION  
B/W TYPE  
5400-A RELAY



### 5400 Wiring Diagram

DIAGRAM D:

LOW LEVEL ALARM  
5400-B INVERSE OPERATION  
B/W TYPE  
5400-B RELAY

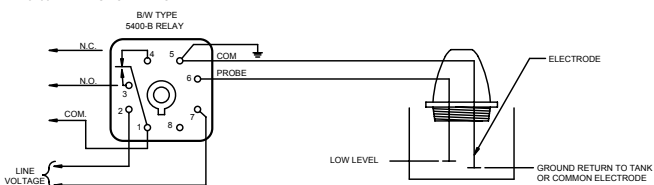


DIAGRAM A:

PUMP DOWN CONTROL  
5400-C DIRECT OPERATION  
B/W TYPE  
5400-C RELAY

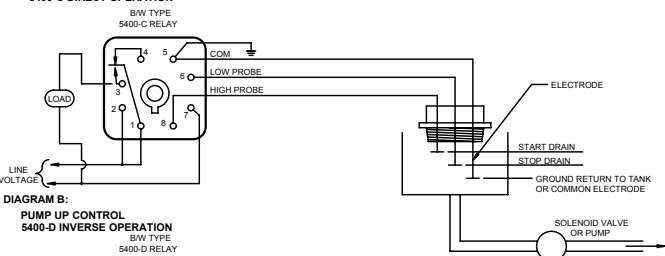


DIAGRAM B:

PUMP UP CONTROL  
5400-D INVERSE OPERATION  
B/W TYPE  
5400-D RELAY

